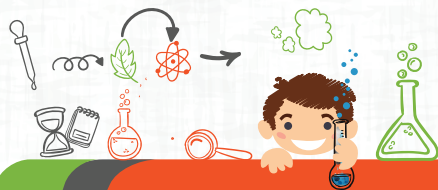


# Course Drawing and Watercolor



In this course we will work on the perception of edges, spaces, relationships, light and shadow and the whole (shape), which will allow them to make realistic drawings of geometric figures and complex objects such as chairs, tables, cars, buildings, nature (leaves, trees, flowers...), hands, faces, bodies and any object of interest to the student. This allows to improve spatial perception thanks to the enhancement of visual, perceptual and global brain activity.

☎ 430 90 00 Ext: 46572 - 46574

✉ [educontinua\\_med@unal.edu.co](mailto:educontinua_med@unal.edu.co)

🌐 [medellin.unal.edu.co/educacioncontinua](http://medellin.unal.edu.co/educacioncontinua)

*Centro de Educación Continua y Permanente  
Dirección de Investigación y Extensión  
Sede Medellín*



UNIVERSIDAD  
**NACIONAL**  
DE COLOMBIA