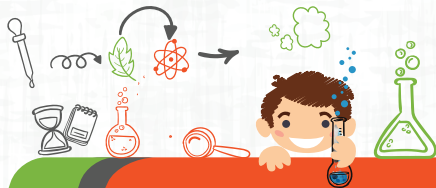


# Course

## The world of small ruminants



The purpose of the course is to bring participants closer to the agrarian world by interacting with animals and their ways of life and thus involve them to generate an impact and create an awareness of care, respect and love for animals and their contribution to human beings using pedagogical processes for the orientation of children. The farm becomes a learning classroom, but not a conventional one, since activities of this nature allow direct contact with animals and nature, which directly affects the neural connections in the brain, favoring intellectual development. In other words, they learn from the experience in an active way by applying a direct educational method, different from what they are normally used to at school.

With this type of activities, previous didactic, pedagogical and social learning is reinforced, and new concepts that they can relate and reorder in their own cognitive scheme are revealed. All this leads them to value the rural environment in a much more special way, something that will be reflected in their daily lives.

☎ 430 90 00 Ext: 46572 - 46574

✉ [educontinua\\_med@unal.edu.co](mailto:educontinua_med@unal.edu.co)

🌐 [medellin.unal.edu.co/educacioncontinua](http://medellin.unal.edu.co/educacioncontinua)